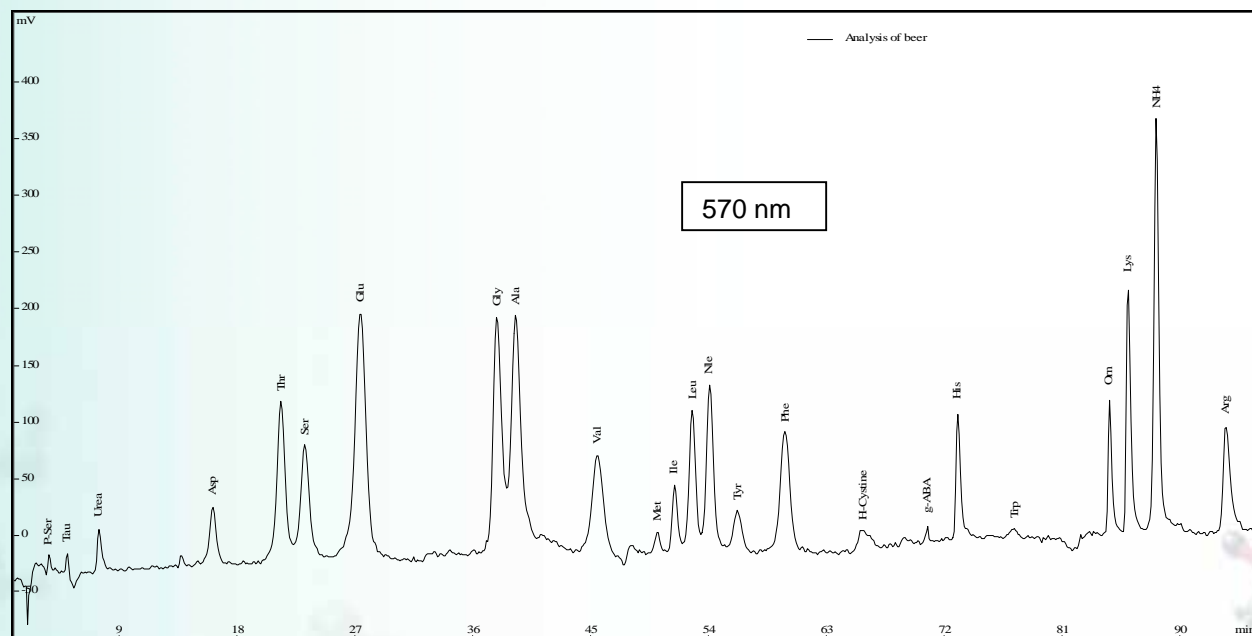


APPLICATION NOTE

Analysis of Beer



beer contains considerable amounts of proteinogenic and physiological amino acids.

Operation Data:

Instrument

Amino Acid Analyzer ARACUS

Elution Buffers

Membrapure Ready-to-Use Buffers A, B, C, D, E and F

Reagent

Membrapure "Reagent for Derivatization"

Pre-Column

narrow bore, stainless steel, 30 mm

Column

narrow-bore, stainless steel, 125 mm, ID 3 mm

Method of Detection

Postcolumn-derivatization with Ninhydrin

Detection wavelength

570 nm

Sample

beer

Sample Preparation

Membrapure Sample Preparation Kit

Additional amino acids / derivatives

Norleucine as internal standard